



PREDICT[®]

Anticipate & Save[®]



CASiP
ENGINEERING

KASiM

CASiP

*Prognostics &
Health
Management*

PREDICT

Management

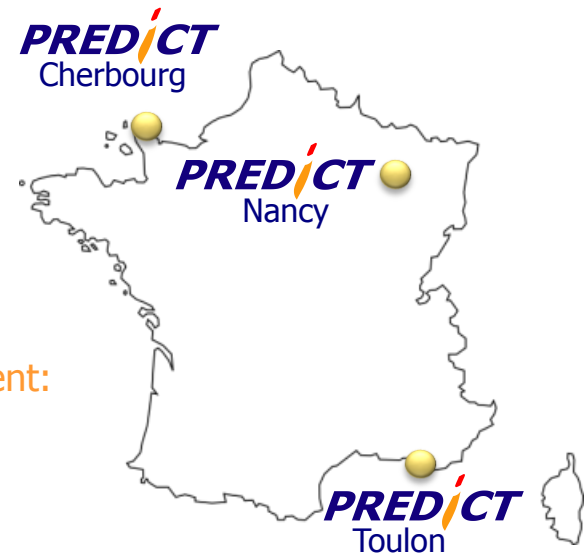
- ✓ CEO: Dr. Jean-Baptiste LEGER
- ✓ CTO: David MOREL
- ✓ CSO: Pr. Benoit IUNG

Business

- ✓ Digital Technologies for Prognostic & Health Management:
 - ⇒ Realtime Monitoring
 - ⇒ Prognostic / Anticipation
 - ⇒ Health Management
 - ⇒ Investigation

Key Figures

- ✓ Investment in RTD: > 7 M€
- ✓ Equity: ~1 M€
- ✓ Treasury: ~400 k€
- ✓ Sales: 1,25 M€
- ✓ People: 15 Engineers



PREDICT : Key Facts

10 000+

Monitored
equipment



Industrial

10+ years

Of operation



Reliability

1 000+

Users



Efficiency

3-6

Months



Payback

15-25%

Increase of
production



Performance

30-45%

Less downtime

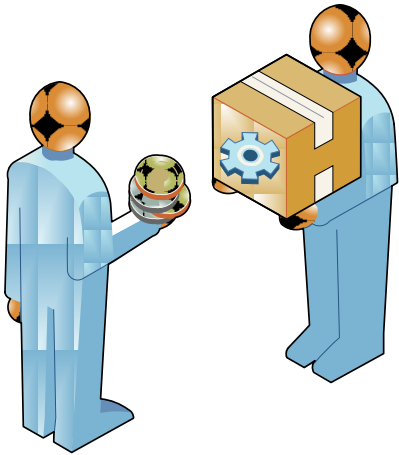


Profitability



PREDICT Products & Services

- ✓ Assist Clients in Maintenance Engineering
 - ⇒ From user needs to implementation following
- ✓ Asset Health Management System Engineering
 - ⇒ From plant analysis to Health Assessment design
- ✓ Implementation of Solutions
 - ⇒ Proactive Real-time Monitoring **CASiP**[®]
 - ⇒ Health Management Platform **KASiM**[®]
- ✓ Services
 - ⇒ Failure anticipation, expertise and investigation



CASiP[®] & KASEM[®] Solutions

- ✓ **Realtime Monitoring**
- ✓ **Health Assessment and Diagnostic**
- ✓ **Failure Prognostic**
- ✓ **Proactive Therapy**



CASIP[®] & KASEM[®] Solutions

With more than 15 years of experience dedicated to Customers, PREDICT develops high technologies in :

Proactive Therapy : 2 complementary software platforms

CASIP Products Line

Marketed since 2002

- **Real time solution of Monitoring and Predictive Diagnostic**
- Open, integrated and interoperable software
- Real time monitoring of industrial installations
- Dysfunction indicators elaboration
- Users alert by proactive way to anticipate actions implementation

KASEM Products Line

Marketed since 2006

- **Collaborative platform of Prognostics, Health Management & Proactive Therapy**
- Fleetwide Health Management
- Predictive diagnostics & prognostics
- Anticipation of therapeutic actions to implement
- Continuous improvement of installations knowledge database

From few plant users (5 to 10) in 2004...

...to several hundreds by site in 2014.



PREDICT "Vertical" Solutions



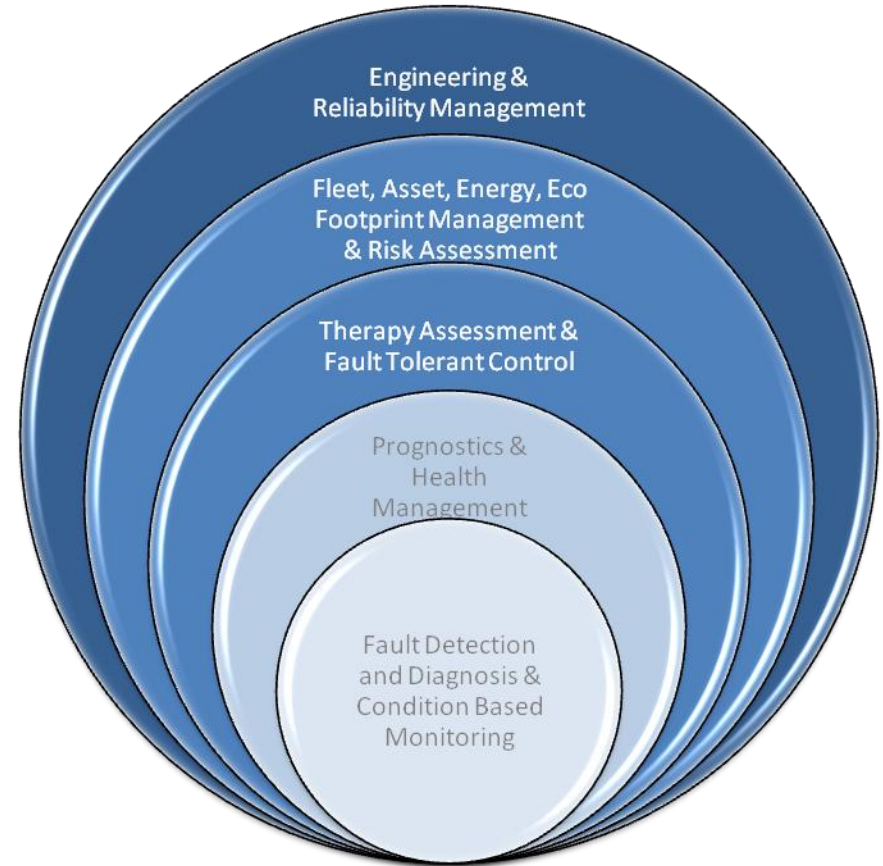
- Function / Flow
- HAZOP / FMECA
- FTA / RCA
- Reliability Analysis



- Therapy Assessment
- Fleet Wide Monitoring
- Health Management
- Diagnosis / Investigation / Prognosis



- Fault Localisation
- Fault Isolation
- Fault Detection
- Condition Monitoring



Common Repository



System and Flow Model
 HAZard & Operability study
 Failure Mode Effects Criticality Analysis
 Fault Tree Analysis
 Root Cause Analysis

RCM
 Reliability Centred
 Maintenance

Acquisition
 Scaling
 Filtering
 Conditioning
 Monitoring

CBM
 Condition
 Monitoring

CASiP
 Engineering



CASiP

Trend
 Approximation
 Extrapolation
 Prediction
 Remaining Useful Life

Prognostic &
 Health Management
PHM

Fault Detection
 & Isolation

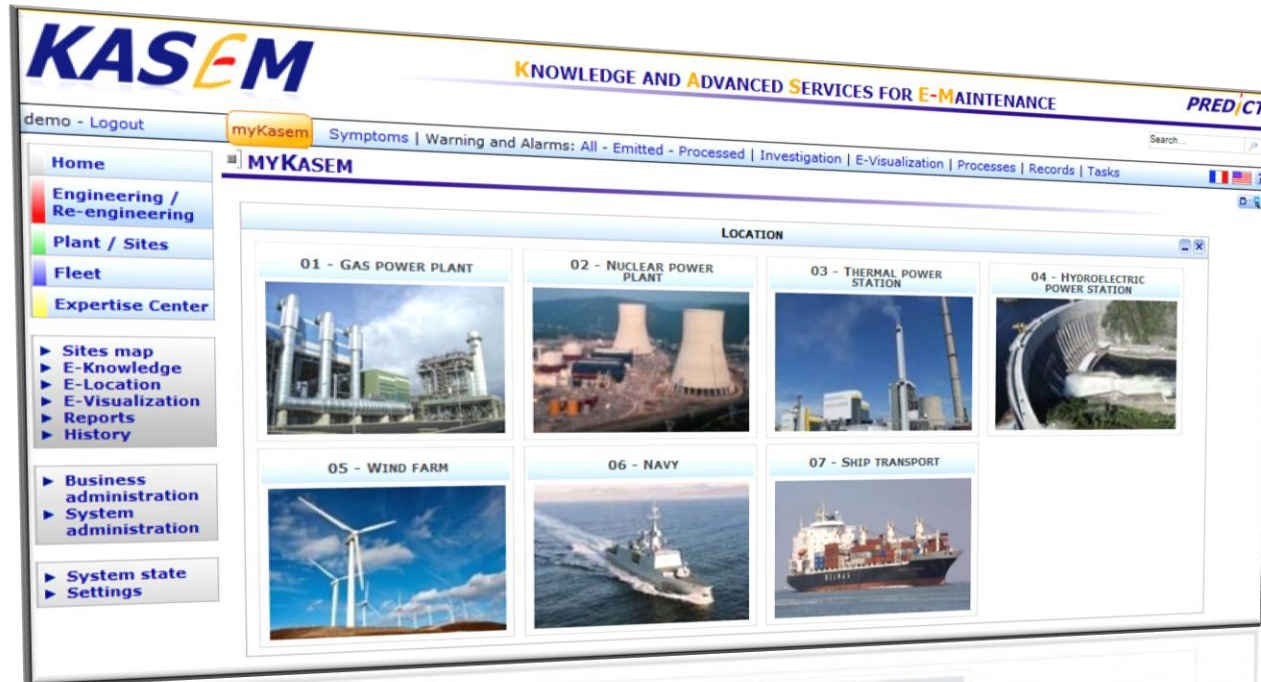
FDI

Characterisation
 Detection
 Recognition
 Isolation
 Identification

KASiEM



KASEM[®]: PHM global process



All along the life cycle

✓ Engineering – Operation – Feedback – Reverse Engineering
for a Plant

✓ Monitoring, Diagnostic, Prognostic, Investigation, Maintenance, Validation, Capitalisation, Optimisation

Visualisation, Situation, Event Log Book, Historian, Knowledge, Communication...
for a fleet

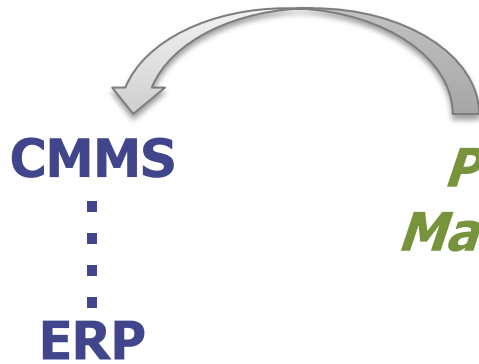
✓ Characterisation, Data Mining, case based research, best practice...

for a support centre

✓ Expertise, feedback, optimisation, amelioration...

From Monitoring to Proactive Maintenance

Workflow



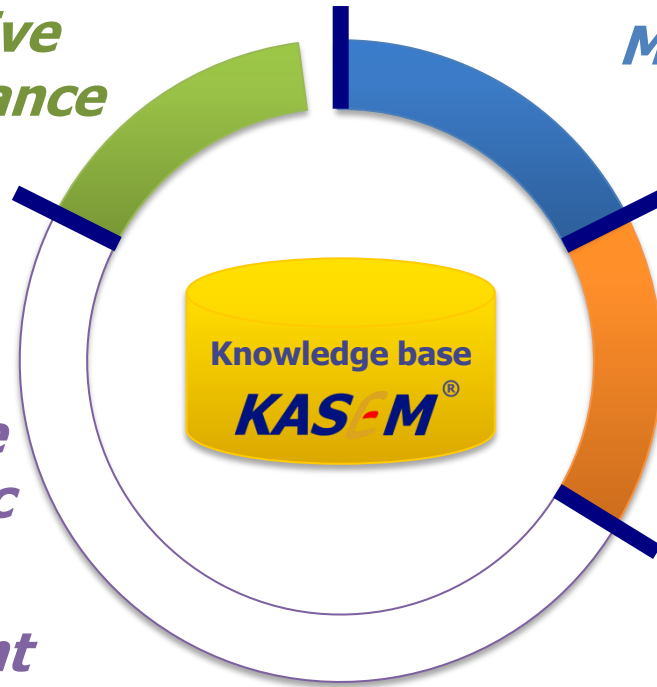
Proactive Maintenance

Sensors
Conditions - Usage

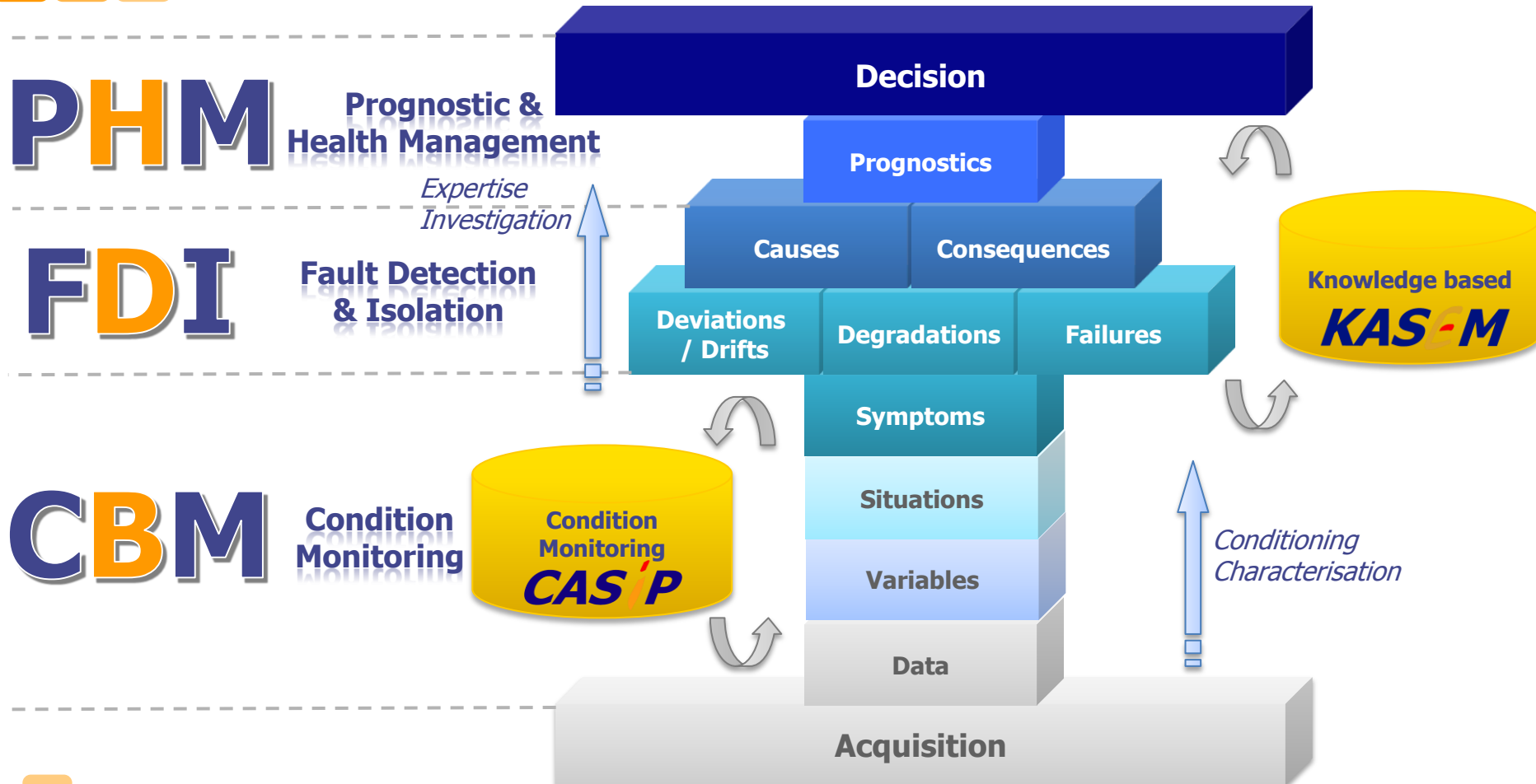
Monitoring

Early Detection Warning

Predictive Diagnostic
Health Assessment
Prognostic



From Raw Data to Decision



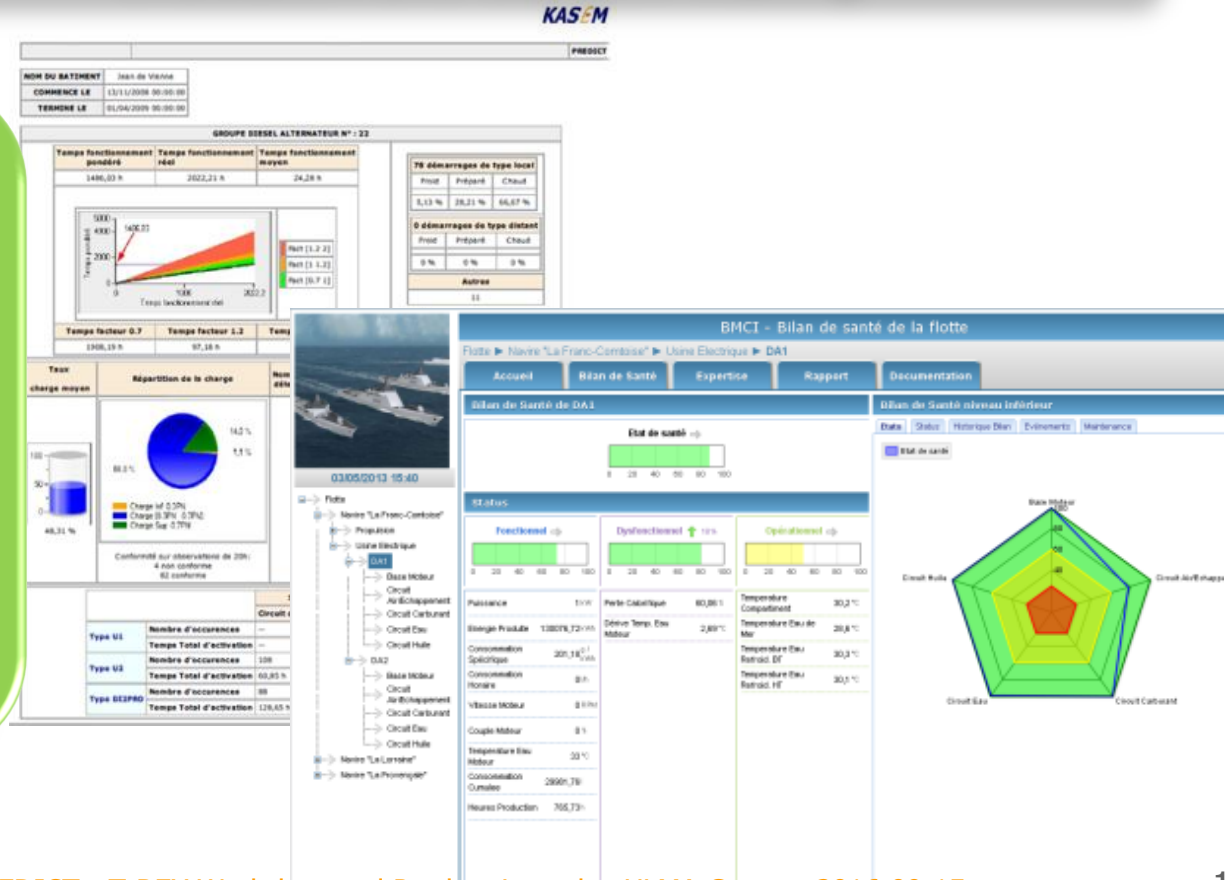
© This confidential document is PREDICT's property and must not be used or transmitted without its agreement



KASEM[®]: Health Management

Key Performance Indicators for efficient health state evaluation and decision-making

- ✓ KPI and health assessment
- ✓ Data fusion and aggregation
- ✓ Analytics
- ✓ From an equipment to a fleet
- ✓ Dashboard and automatic reporting



© This confidential document is PREDICT's property and must not be used or transmitted without its agreement

Diesel Monitoring and Remote Diagnostic

Fleet: 12 warships / ~55 diesel engines

Objective: Fleet-wide monitoring, remote predictive diagnostic to optimise proactive maintenance and fleet-wide analytics to improve maintenance program and new build

KASEM KNOWLEDGE AND ADVANCED SERVICES FOR E-MAINTENANCE

mercredi 9 octobre 2013 18:45 (GMT + 2)

Accueil | myKasem | Symptômes | Alertes & Alarmes : Toutes - Emises - Traitées | Investigation | E-Visualisation | Equipements | Relevés | Interventions

MYKASEM

PLAN DE TRAVAIL

Alertes et Alarmes

ETAT SYSTÈME











SYSTÈMES

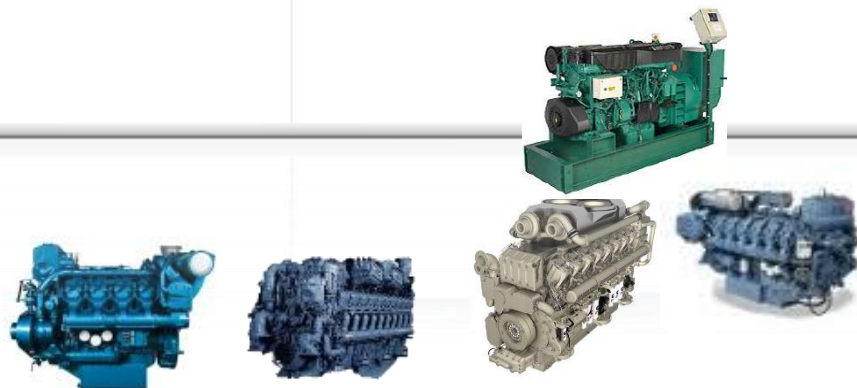
DÉGRADÉS	DÉFAILLANTS	MAINT.
0	0	0

ALERTES

PRÉSENTES CONSULTÉES VALIDÉES REJETÉES
0 0 0 0

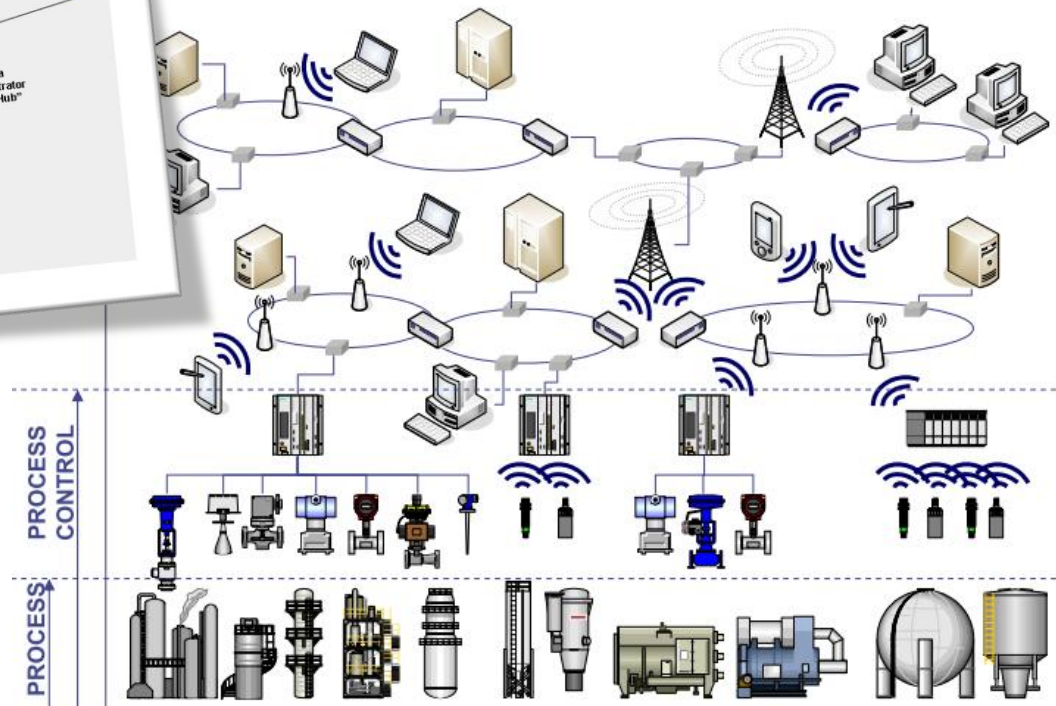
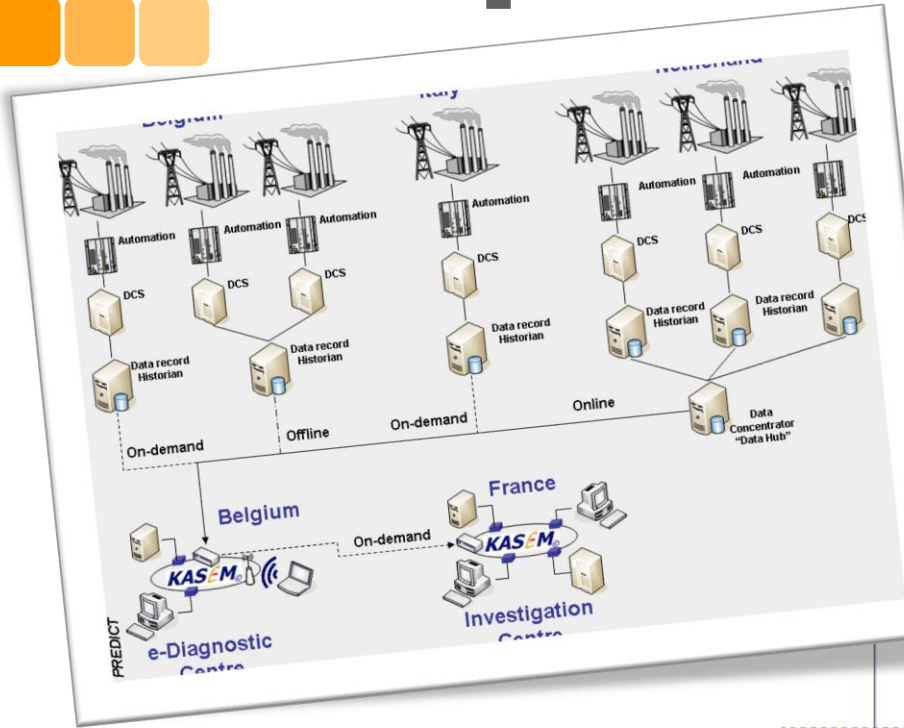
LOCALISATION

FORBIN Aucune alerte non traitée Aucun comoteur en alerte 	CHEVALIER PAUL Aucune alerte non traitée Aucun comoteur en alerte 	DUPLEIX Aucune alerte non traitée Aucun comoteur en alerte 	JEAN DE VIENNE 127 alertes non traitées 	L'ADROIT 16 alertes non traitées Aucun comoteur en alerte 
MONTCALM Etat inconnu 	AQUITAINE Aucune alerte non traitée Aucun comoteur en alerte 	FORBIN Aucune alerte non traitée Aucun comoteur en alerte 	NORMANDIE Aucune alerte non traitée Aucun comoteur en alerte 	PA CDG Aucune alerte non traitée 



- ✓ Embedded systems
- ✓ Interface with control system
- ✓ Sensors
- Wireless communication
- ✓ Remote Access
- ✓ Fleet-wide platform

Examples of architecture



Fleet-wide Health Monitoring for Industry 4.0



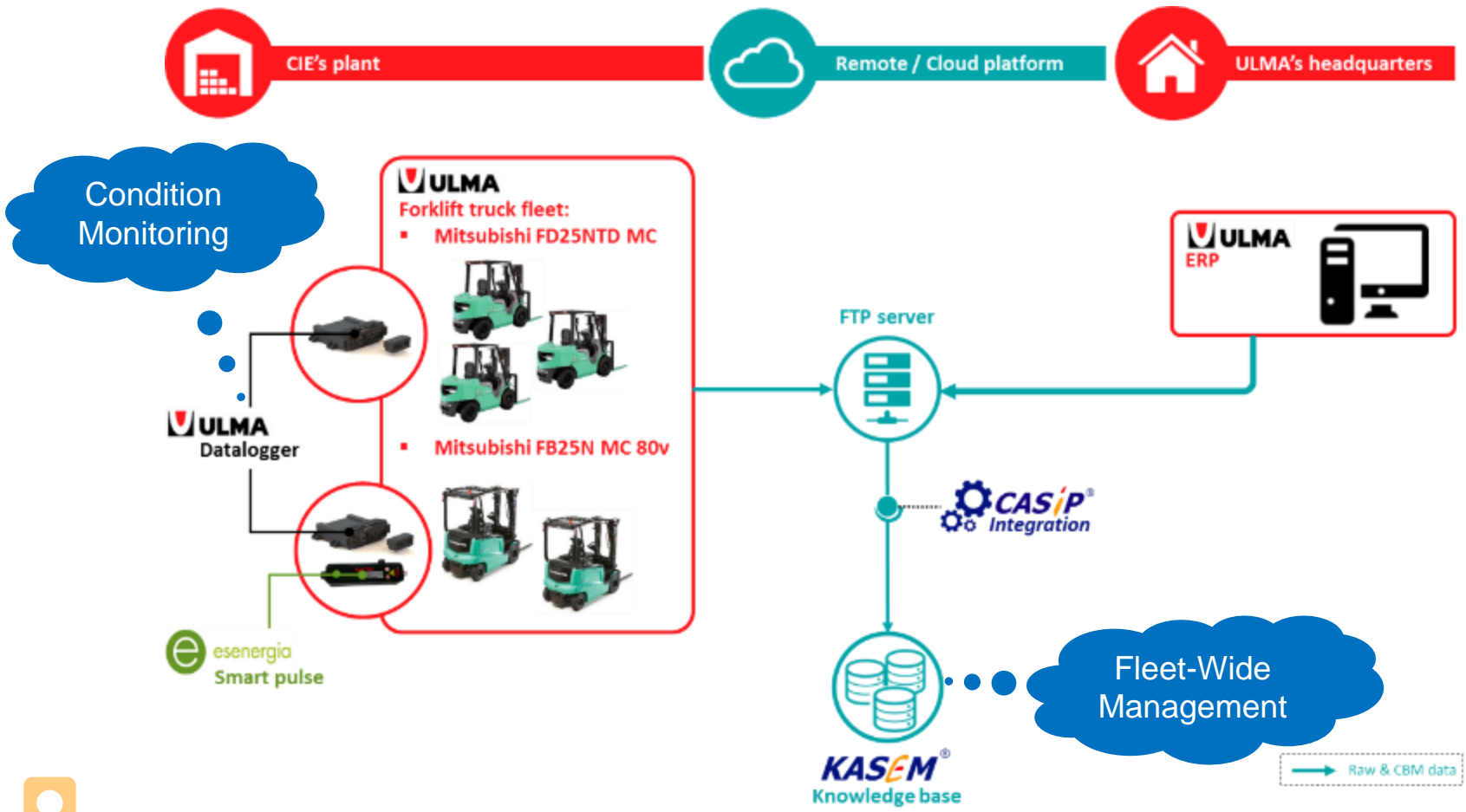
**LIFECYCLE EXTENSION THROUGH PRODUCT REDESIGN AND
REPAIR, RENOVATION, REUSE, RECYCLE STRATEGIES FOR
USAGE&REUSAGE-ORIENTED BUSINESS MODELS**

PREDICT

F. Peysson, D. Léon, C. Mozzati, R. Aras, JB. Léger

Industrial Vehicles Application

Data Flow & Platform



Raw data and local alarms are transmitted to the cloud platform every 5 minutes.



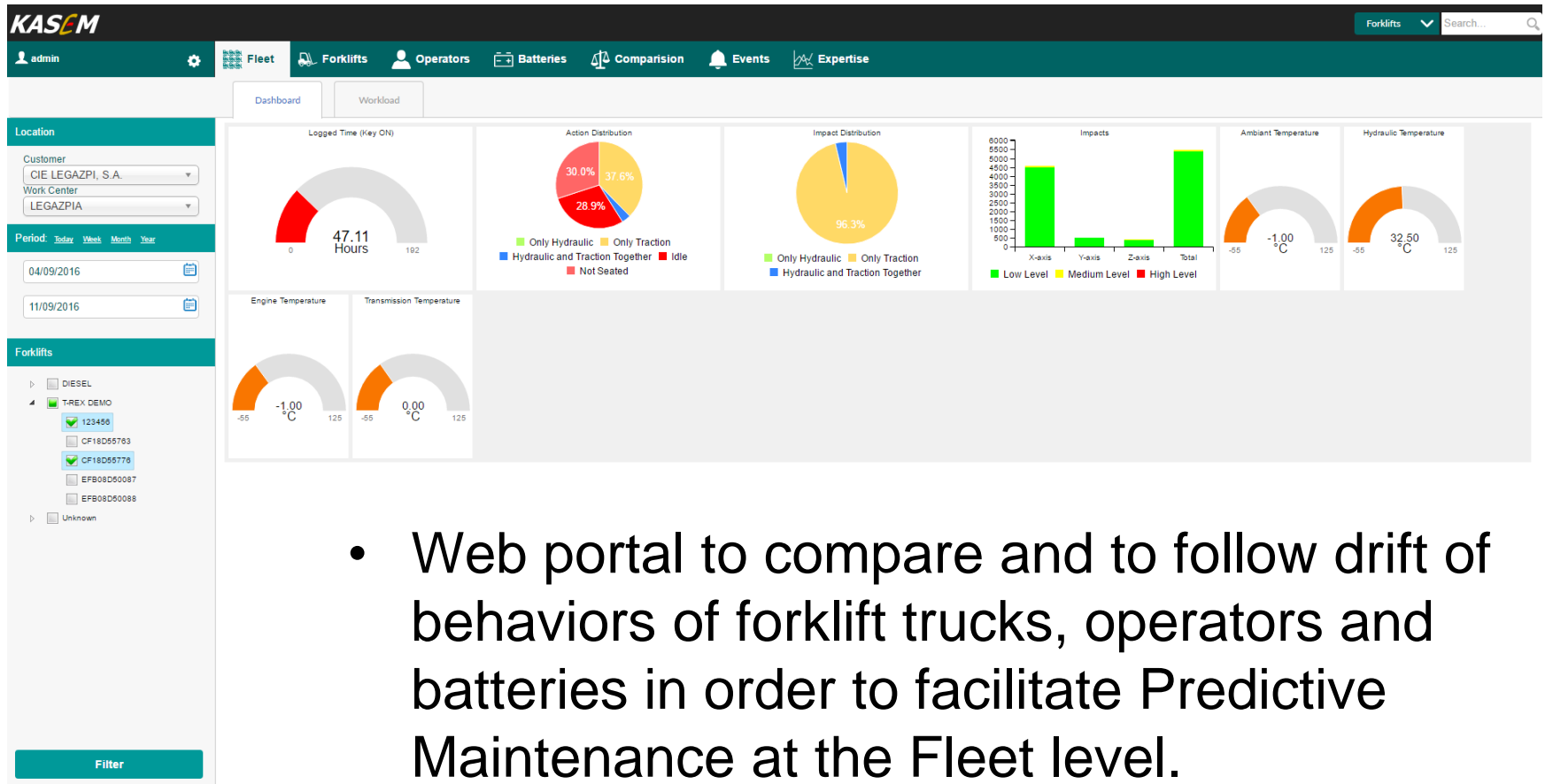


Factories of the Future
Public Private Partnership



Industrial Vehicles Application

Fleet-Wide Manager



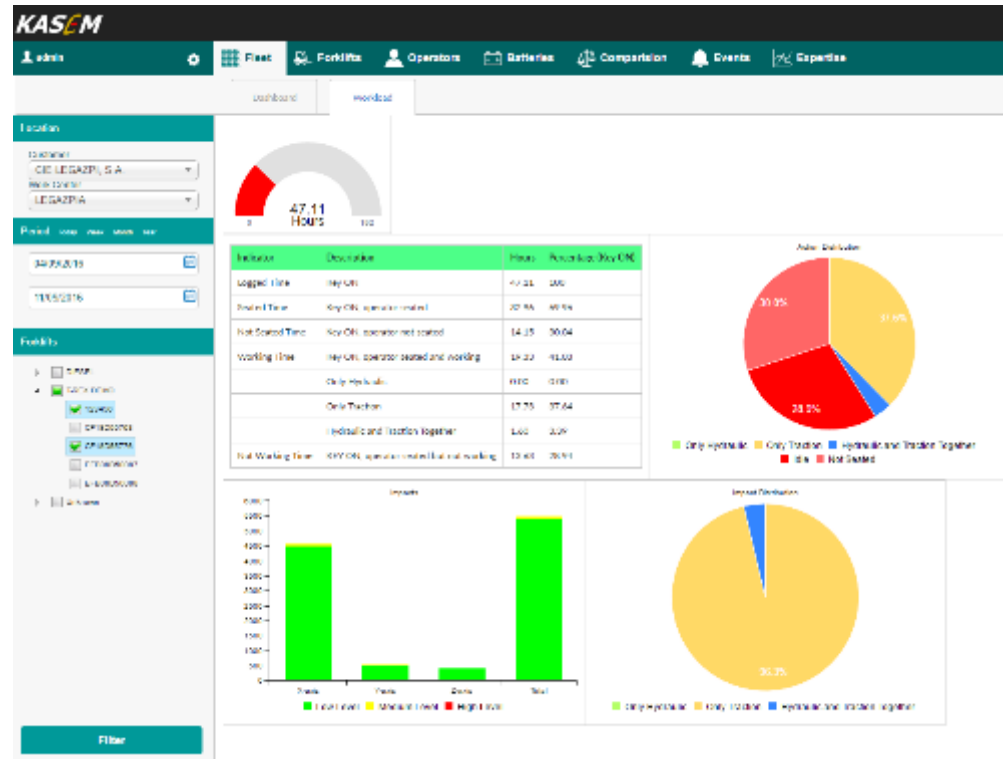
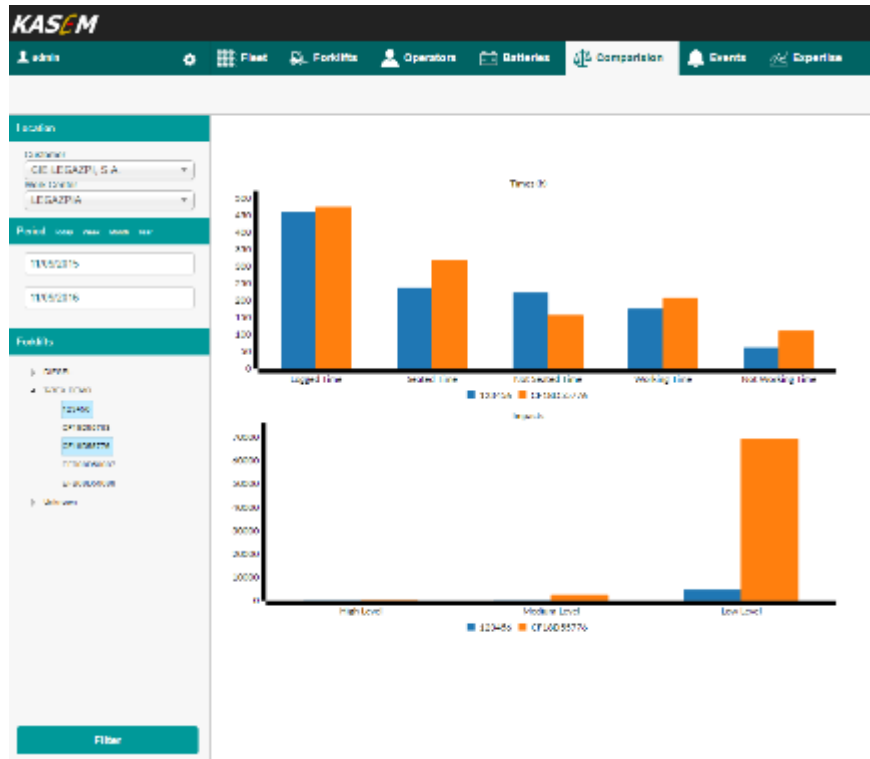
- Web portal to compare and to follow drift of behaviors of forklift trucks, operators and batteries in order to facilitate Predictive Maintenance at the Fleet level.

© This confidential document is PREDICT's property and must not be used or transmitted without its agreement



Industrial Vehicles Application Performance

Usage and conditions comparison of forklift trucks



© This confidential document is PREDICT's property and must not be used or transmitted without its agreement

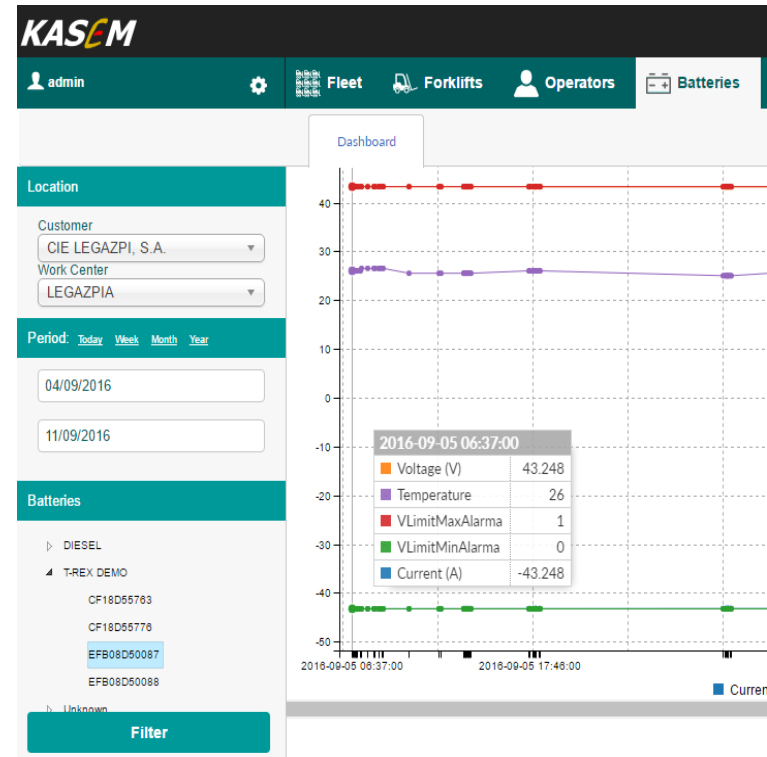
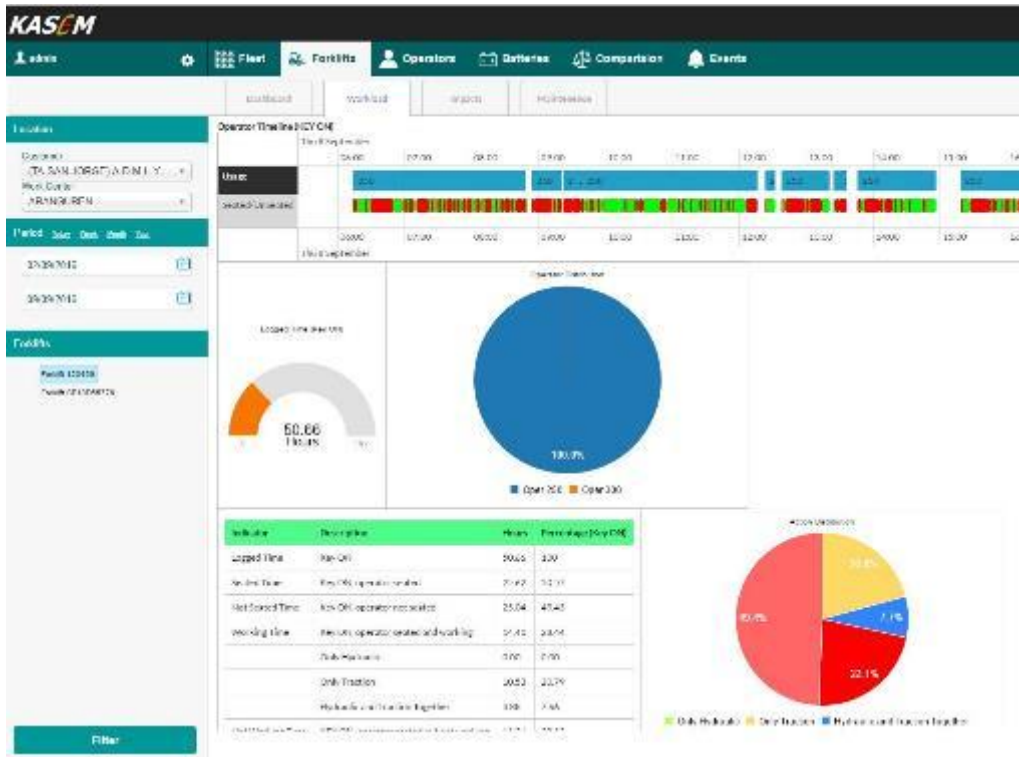


Factories of the Future
Public Private Partnership



Industrial Vehicles Application Performance

Behavior monitoring of electric forklift truck

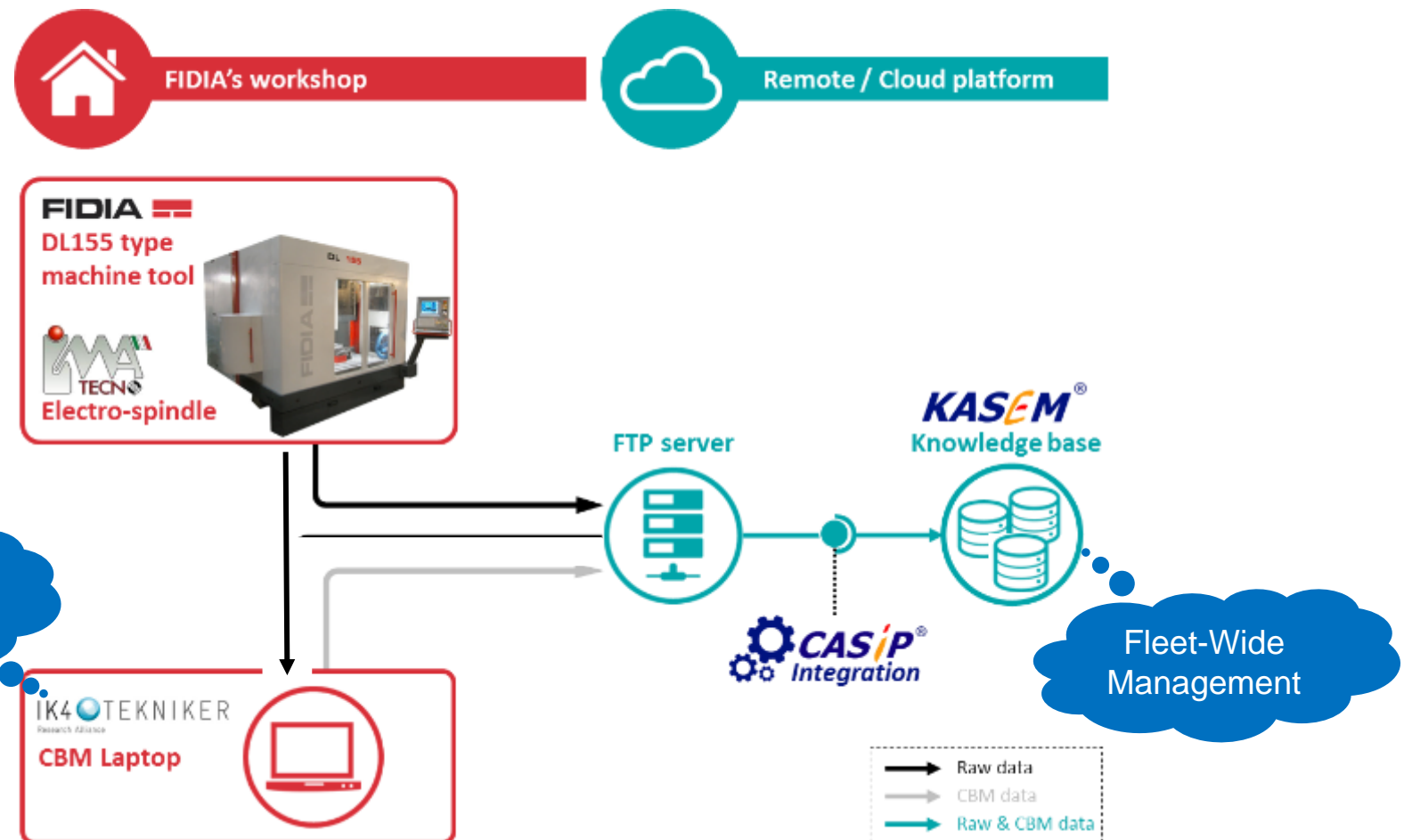


© This confidential document is PREDICT's property and must not be used or transmitted without its agreement



Machine-Tools Application

Data Flow & Platform



Raw data are transmitted at end of a maintenance test session.





Factories of the Future
Public Private Partnership



Machine-Tools Application

Fleet-wide tests follow-up



- Mobile web application

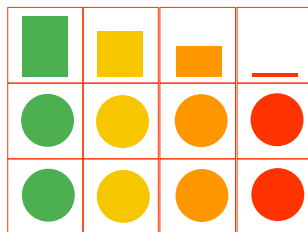
- Fleet Health of machines



- Set of sessions of tests per machine, status and trends



- Set of parameters per test session and status



@ This confidential document is PREDICT's property and must not be used or transmitted without its agreement



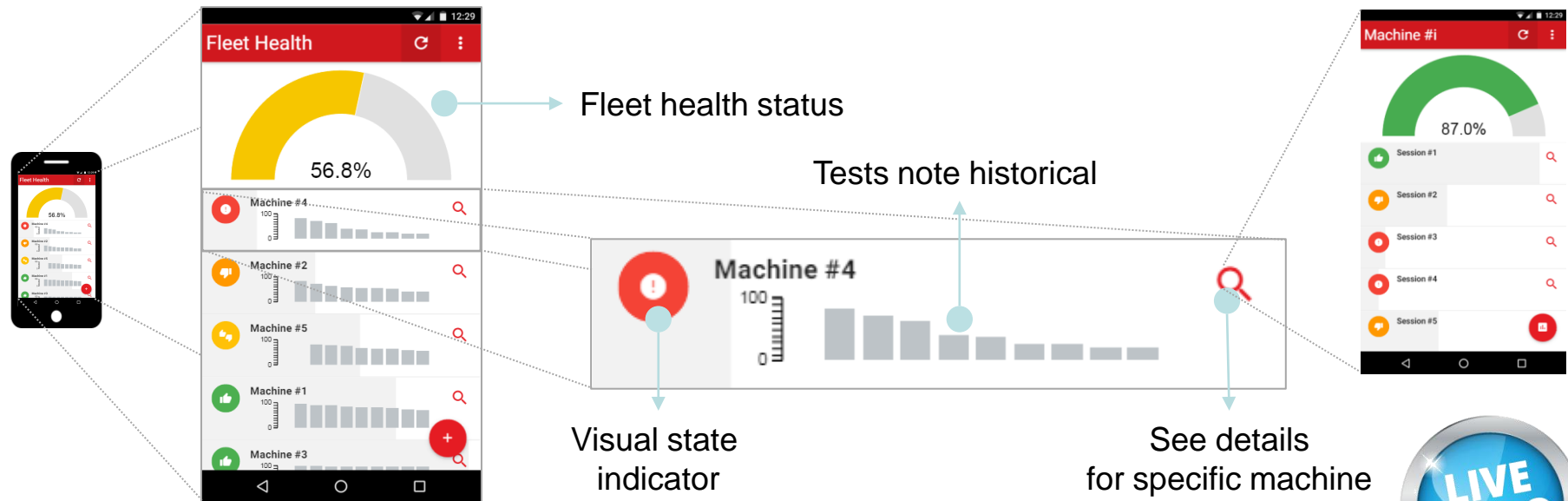
Factories of the Future
Public Private Partnership



Machine-Tools Application

Fleet-wide tests follow-up

- Mobile web application

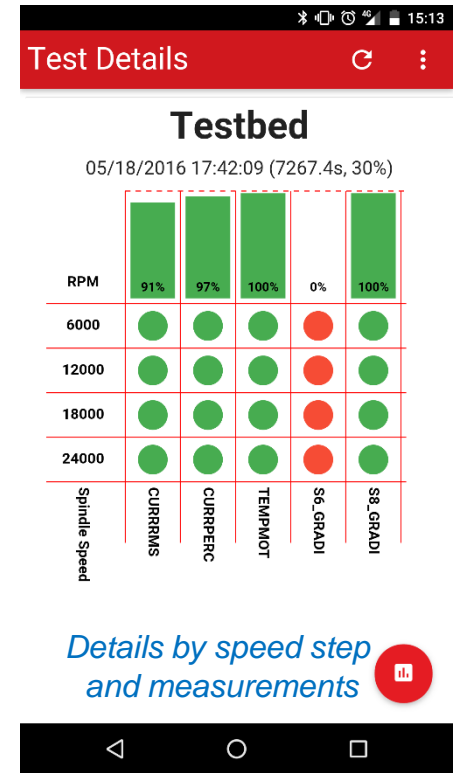
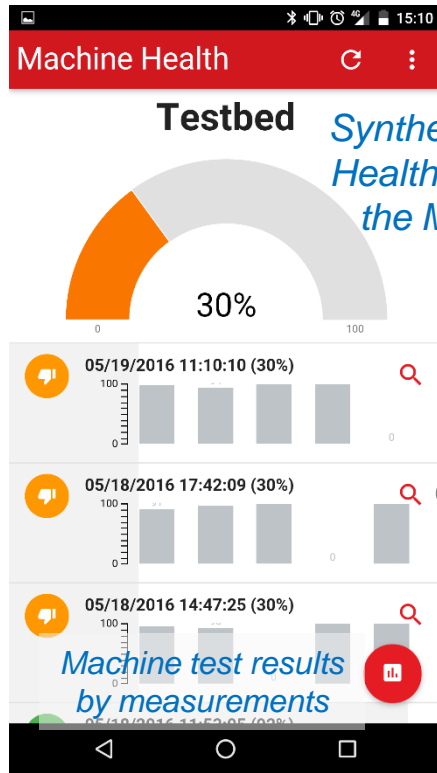
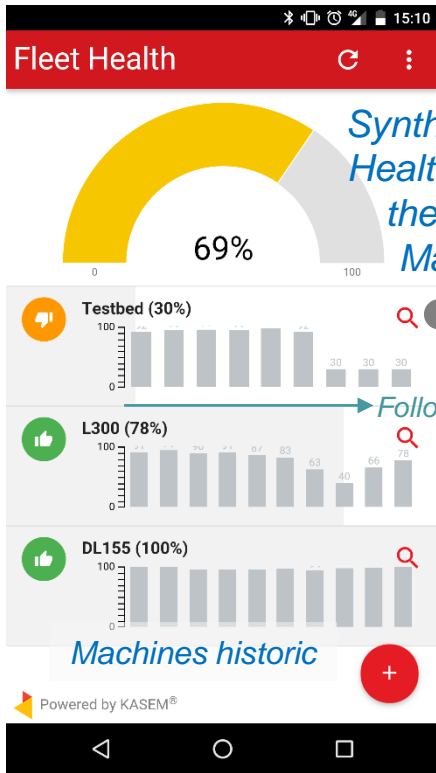


© This confidential document is PREDICT's property and must not be used or transmitted without its agreement

Machine-Tools Application

Fleet-Wide tests session follow-up

Apps to facilitate Predictive Maintenance everywhere



Synthetic Health Indexes Comparison

Follow-up and Trend

Machine test results by measurements

Details by speed step and measurements

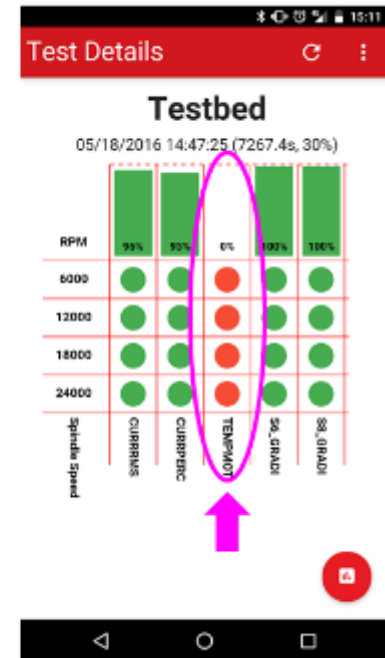
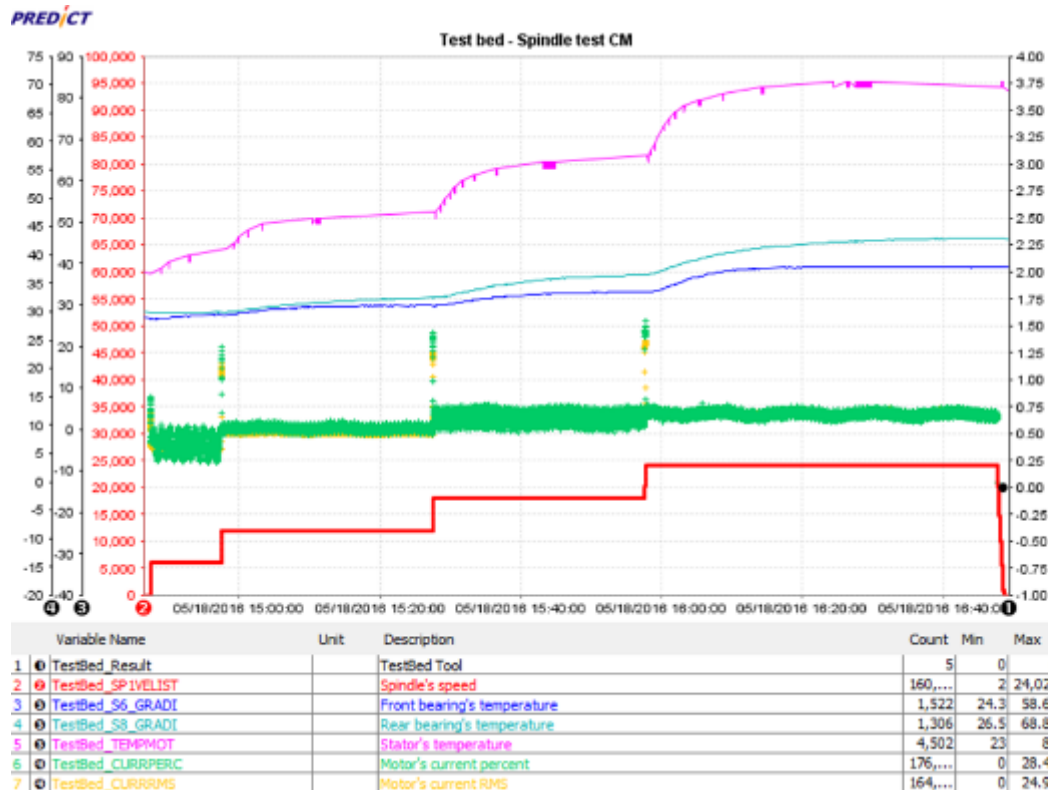
@ This confidential document is PREDICT's property and must not be used or transmitted without its agreement



Machine-Tools Application

Performance

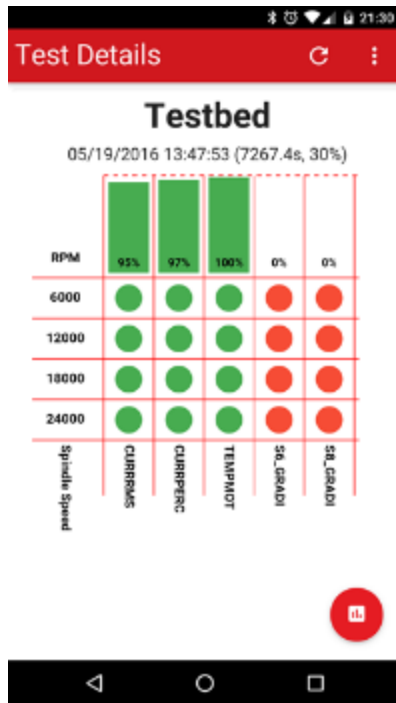
Motor winding fault



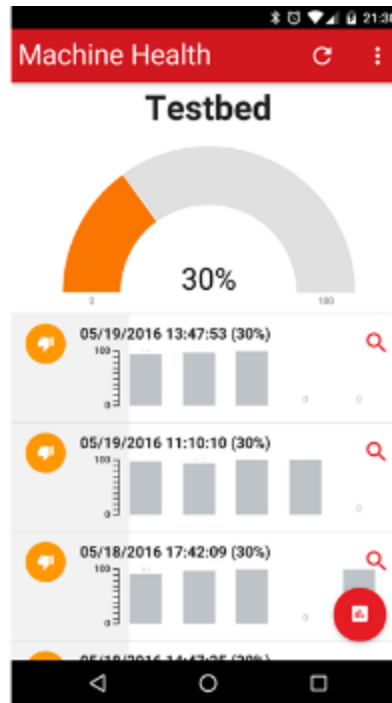
Only motor temperature indicator is impacted.

Machine-Tools Application Performance

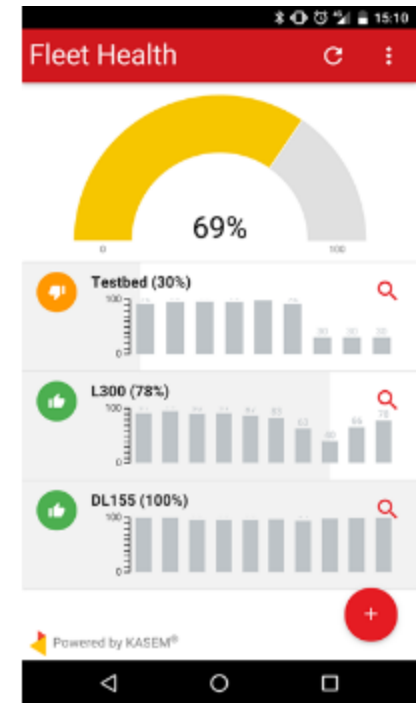
Machine tools and fleet health



Test session level

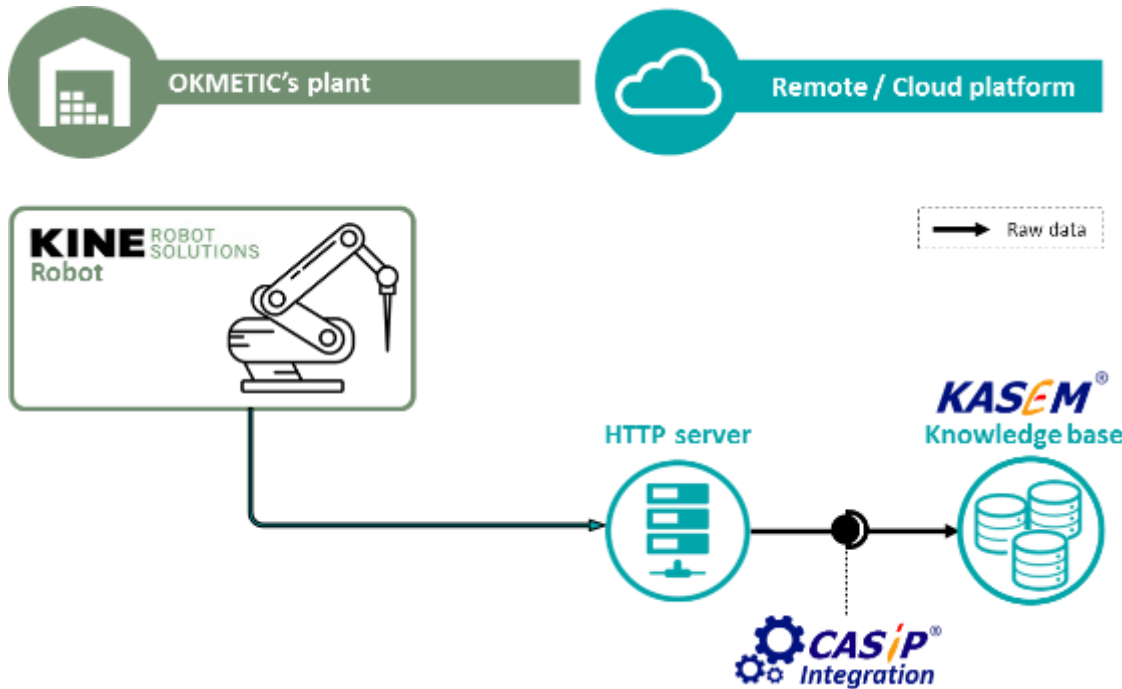


Machine level



Fleet level

Robot System Application



Information	Unit
Robot online	on/off (line)
Robot cycle time	s
# of processed products per hour	product/hour
# of processed products since last maintenance	product
Uptime since last maintenance	-
Robot temperature	°C
Robot power consumption	-
Pressure of air supply	-
Pressure of secondary gas supply	-
Level of vacuum	-
Flow of compressed air	-
Flow of secondary gas	-
Status of cart position	in/ not in (place)
Status of safety	-
# of cart locking cycles	-
Cart locking cylinder moving	-
Cart locking cylinder movement time	s
Product gripped	gripped/ not gripped

its agreement

Raw data are transmitted each second to the cloud platform.

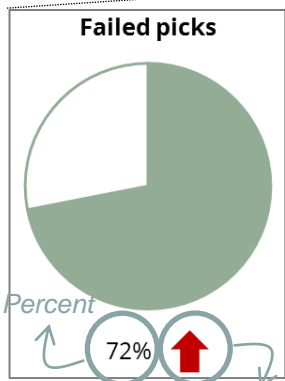
Robot System Application

Operation Reports



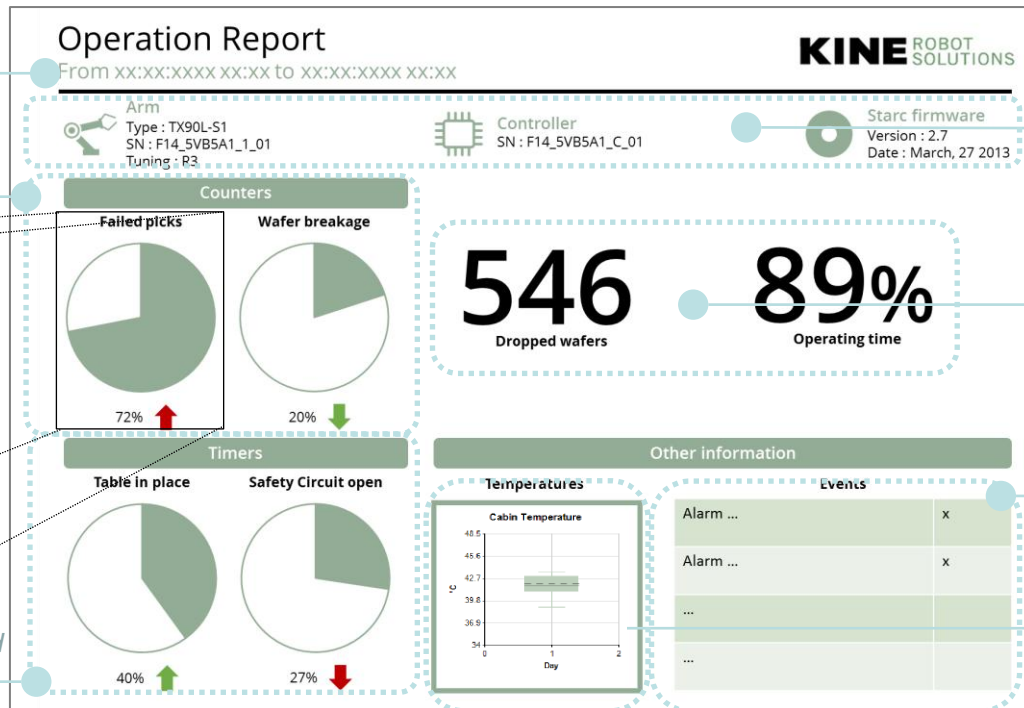
User defined periodic report

Counter type KPI



Evolution since last period

Timer type KPI



Automatic system's configuration detection

Period's key facts

Main events' log

Temperatures' statistics

© This confidential document is PREDICT's property and must not be used or transmitted without its agreement

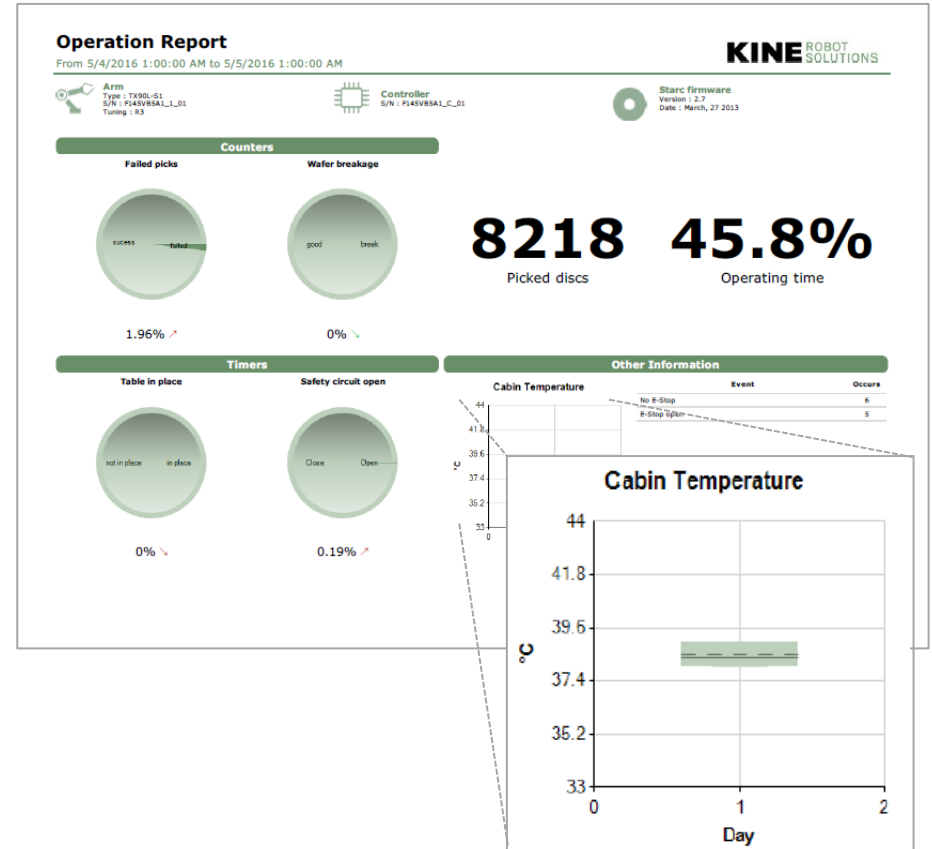
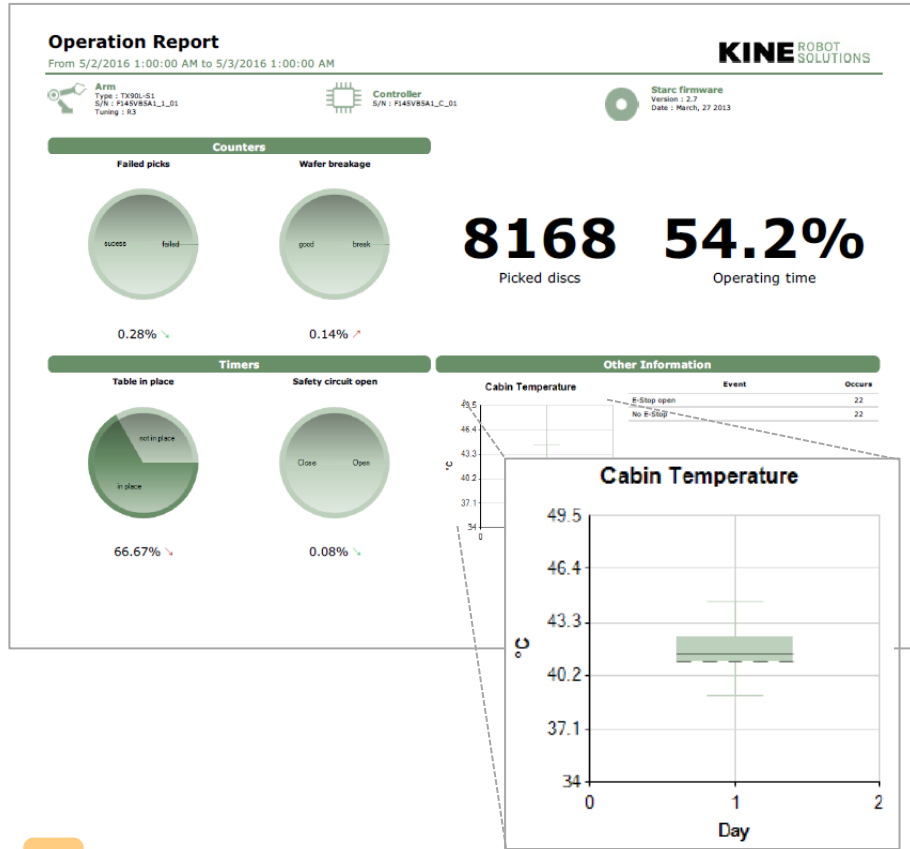


Factories of the Future
Public Private Partnership



Robot System Application Performance

Daily report of robot performances



Return on Investment



- Return on investment: **10 times**
- Benefits starting between **3 to 6 months** after solutions commissioning
- Reduction in maintenance costs: **25% to 30%**
 - Proactive maintenance program can provide a cost saving of 8% to 12% over a program utilizing preventive maintenance strategies
 - Cost saving opportunities of 30% to 40% could easily be realized regarding a reactive maintenance approach and material condition.
- Elimination of breakdowns: **70% to 75%**
- Reduction in downtime: **35% to 45%**
- Increase in production: **20% to 25%**
- Maintenance planning postponed from 30% to 40% -> **only 3 maintenance cycles to save one**

Predictive

- 67% OEE
- 74% plant throughput
- 34% Asset downtime

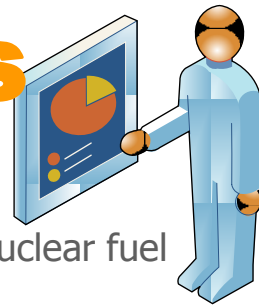
Reliability centred

- 86% OEE
- 91% plant throughput
- 13% Asset downtime

Proactive

- 93% OEE
- 97% plant throughput
- 3% Asset downtime

Some **verified experiences**



**Prognostic range
6 months**

Nuclear Fuel Recycling

- Design and development of prognostic system to anticipate the nuclear fuel recycling workshops breakdowns
- Implementation of service contract for breakdown anticipation

**Prognostic range
3 months**

Nuclear Fuel Manufacturing

- Design and development of prognostic system to anticipate nuclear fuel manufacturing lines breakdowns
- Service contract Implementation of breakdowns anticipation

Nuclear Energy

- Design and development of prognostic solution to anticipate nuclear auxiliary systems breakdowns

**Prognostic range
2 months**

Navy

- Design and development of prognostic solution to anticipate frigates propellant system breakdowns and power supply failures

**Prognostic range
1 month**

Power Plant

- Design and development of prognostic system to avoid power plant sea water cooling systems fouling



Some References



Aeronautics and Space

- ✓ AIRBUS D&S, Dassault Aviation, SNECMA, THALES...

Chemistry and Oil

- ✓ AREVA NC, NOVASEP , TOTAL, NESTE OIL (Fi)...

Defense

- ✓ AREVA TA, CEA, DCNS, DGA, SPHEREA...

Power Energy (included Renewable Energy)

- ✓ ALSTOM, AREVA SA, AREVA SE, DALKIA, DCNS, EDF, EDP (P), ENGIE (B & NL), HUST (China), IBERDROLA (E), PROET (P), SINTEF (N), STEG (Tn)...

Automotive, Manufacturing and Steel Industry

- ✓ ARC Internat., ARCELORMITTAL, GORATU (E), IMERYYS (UK), INNOTHERA, KINE (Fi), LDC, SOLYSTIC, ST MicroElectronics, STORAENSO (FI), ULMA (E)...

Nuclear Industry

- ✓ AREVA NC, AREVA NP, CEA CESTA (LIL), CEA Marcoule, EDF, EURIWARE, INTERCONTROLE, JSPM, SGN...

Contacts



Jean-Baptiste LEGER

Jean-Baptiste.Leger@predict.fr

Florent BARBIER

Florent.Barbier@predict.fr



PREDICT

19 avenue de la Forêt de Haye
54500 Vandœuvre-lès-Nancy

www.predict.fr

